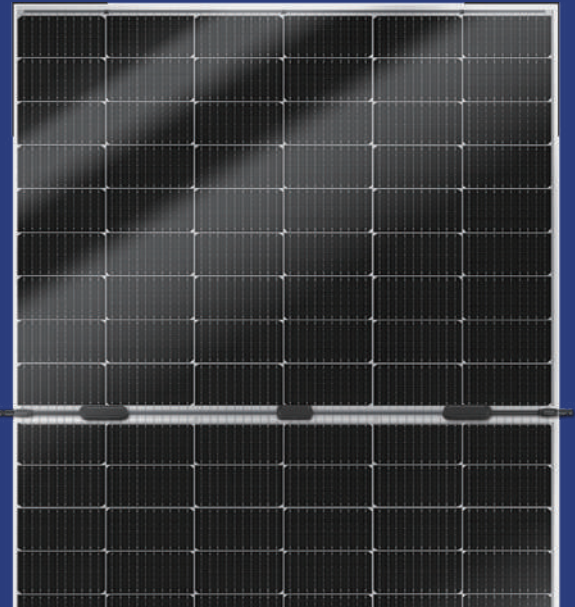


Lightweight solar panel

Lightweight and high-strength
High-efficiency PV modules

420W



• Main Features

- 
Light Weight
Weight 5.2 kg/m² for low load roof
- 
High Strength
The surface of ultra-thin tempered glass, resistant to hail impact and load
- 
High Efficiency
High light transmittance, more than 3% higher power than similar products, higher power generation, higher income
- 
Stable and Reliable
Meet the IEC61215 enhanced environment test and low attenuation characteristics
- 
Easy to install
A variety of installation methods, bonding and fixation, removable pressure block fixation
- 
safe and secure
Anti-ash accumulation design, light quality and safety, higher income, convenient operation and maintenance

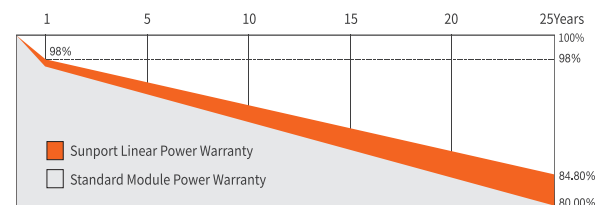
• Quality System

ISO9001
ISO14001
ISO45001

• Product Certificate

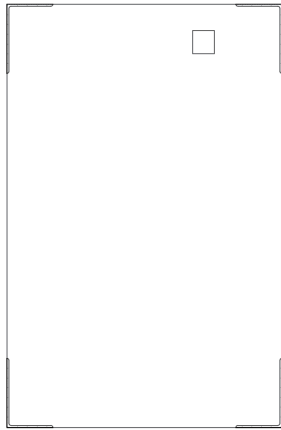
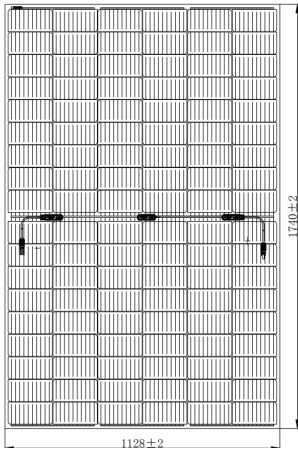


• Product Guarantee

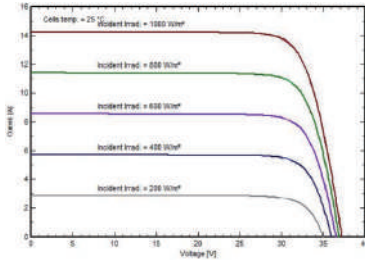


Tel / +86 131 3771 8313, +86 188 3741 8885
E-Mail / info@ericcity.com
Web / www.ericcity.com

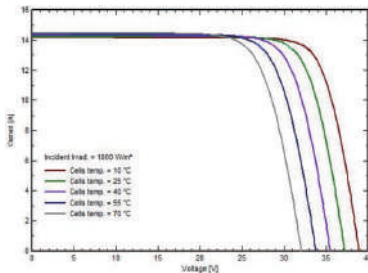
©2023 Ericcity. All rights reserved. Specifications subject to technical changes. Version number.2023/7



Curves of SSD410AH5T at different irradiance



Curves of SSD410AH5T at different cell temperature



Electrical Performance Parameters

Specification	ERIC420C
	STC
Nominal Power (P_{nom})	420W
Voc (V_{oc})	37.60V
Isc (I_{sc})	14.22A
Vmp (V_{mp})	31.66V
Imp (I_{mp})	13.29A
Efficiency (η_p)	22.4%
Tolerance	0 ~ +5W
Maximum system voltage	DC1500V(IEC)
Maximum rated fuse current	25A

STC:AM=1.5, Irradiation:1000W/m², Temperature:25°C
 NMOT: Irradiation:800W/m², Temperature:20°C, Air Speed:1m/s

Structural Properties

Dimension	1740mm×1128mm×2.8mm
Weight	10.3kg
Glass specification	High permeability tempered glass
Solar panel cell	108(6x18) / Mono / 182*91mm
Encapsulation material	EVA
Frame	PPO Edge protection
Junction box	IP68, Customizable / 4mm ² , MC4 compatible
Waterproof	IP65
Output conductor	4.0mm ² (IEC) Length:90cm MC4
Mechanical load	3600Pa/2400Pa

Temperature Property

Nominal Module Operating Temperature	43±2°C
Temperature coefficient of Pmax	-0.35%/°C
Temperature coefficient of Voc	-0.26%/°C
Temperature coefficient of Isc	0.048%/°C
Operating temperature range	-40°C ~ +85°C

Packing

Container Size		Quantity(pcs)	Quantity(per pallet)
40HQ	Vertical Packing	1056	44

